

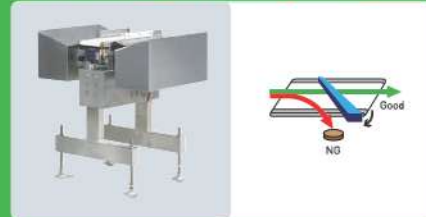
Application



Auto Rejectors Available as option

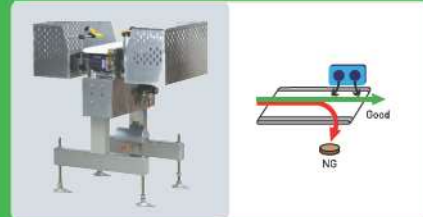
Flip Bar

For small sized (100~250mm) and light weighted (up to 6.0 kg) products
For relatively high-thickness products



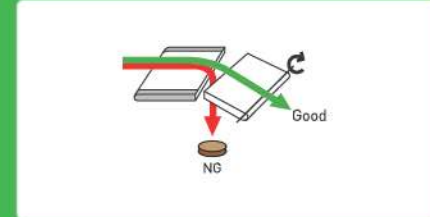
Air Blast

For small and light weighted (Max. 0.6kg) products moving in a high speed



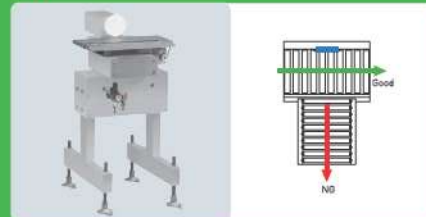
Dumper Chute

For products transferred in bulk



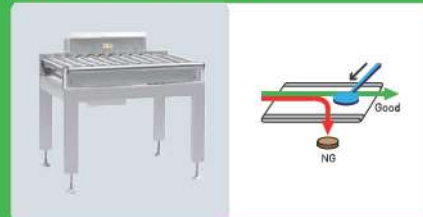
Pusher on Belt

For relatively light weighted (Max 0.6 kg) products



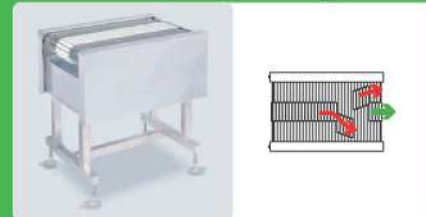
Puhsrer on Roller

For relatively heavy weighted (Max 30.0 kg) products contained in a box



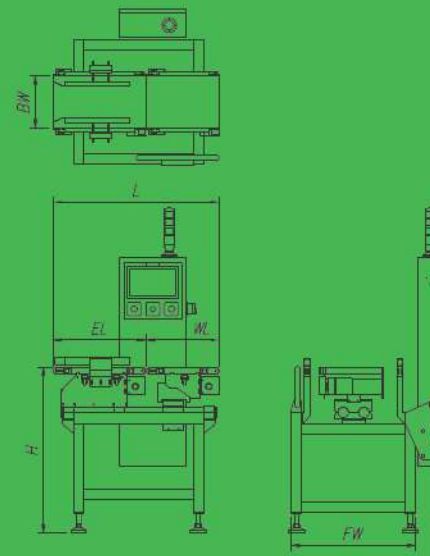
Slide Carrier

For light weighted (about 0.6 kg) products contained in a try, a cup and a bag.



Drop Belt

For relatively light weighted (Max. 6.0 kg) and low-thickness products in a limited site



NOWSYSTEMS No. N180125-N180125-90S Series Printed in Korea



AUTO CHECK WEIGHER NWC-490S Series



NWC490S Series auto check weigher has been developed to satisfy the strictest production requirements, providing ease of operation, flexibility, hygiene, high-speed processing and optimum accuracy by measuring product weight quickly and precisely rejecting "out of tolerance".

Full color touch screen is easy to see and offers a simple user-friendly menu together with various convenient functions. The unique modular design allows easy on-site adjustment for installation and remarkable accessibility for maintenance which enables minimal downtime.

-  Full Color TFT LCD Touch Screen
-  Easy Update through USB Memory Stick
-  Digital Signal Processing Sensor
-  External Printer (Optional)
-  User Level Choices
-  Metal Detector (Optional)
-  Easy Production Record Statistic Function
-  Communication Interfaces (Optional)
-  Many kinds of Operating Screens
-  Feedback Control (Optional)
-  Selectable Conveyor Belt Type
-  Internal Memory and USB Disk Backup / Recovery
-  Wash Down for Conveyor (Optional)

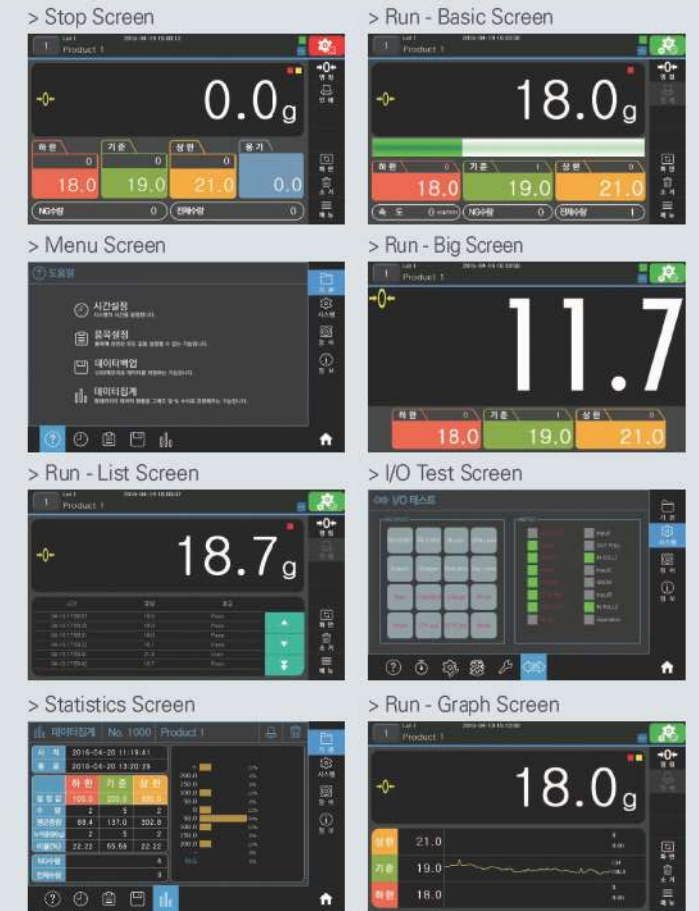
Main Features

- Full Color TFT LCD Touch Screen**
 - HMI(Human Machine Interface) application
 - Display that is showed at any angle
 - Interactive menu and set-up
- High performance**
 - Digital filter through DSP(Digital Signal Processing)
 - AD converter applied 16 bits
 - Speed(full range) control on touch screen through inverter
 - SSR(Solid State Relay) with stability and long life time
- Data communication**
 - Data download by Excel format through USB drive(Standard)
 - Data opening at Excell program in computer
 - Communication with RS-422, RS-232C
- Limit frame**
 - Loadcell protection from vibration during transportation
- Easy to maintenance**
 - Pipe frame that does not allow dust on frame, removing sanitary matters
 - Clip-on conveyor for easy cleaning
 - No Rust with Stainless stell frame
- Upgrade**
 - Upgrade through USB drive easily
- Many kinds of Operating Screens**
 - Many kinds of Operating Screens (Basic, List, Line, Statistics ETC) are provided depending on user taste
- Selectable Conveyor Belt Type**
 - Either plastic chain belt or urethane belt can be selected for application
- Easy Production Record Statistic Function**

Control Unit



- Product no**
The current product number is displayed. You can change the product number.
- Product name**
The Product name of the current product number is displayed.
- Conveyor status**
The current status of the conveyor is displayed.
- Current weight**
Current weight is displayed.



- Set buttons**
Weight settings are displayed. You can set the weight for judgment.
- Counter**
The accumulated number of products for each judgment result.
- Function buttons**
You can use the buttons to use various functions.
- Status icon**
This icon show the status of the machine and judgment result.

Main Features

- Full Color TFT LCD Touch Screen (7.0 Inch 16.7M Color TFT LCD & Resolution: 800 x 480)**
- User Level Choices**
- Easy Production Record Statistic Function**
- Various Kinds of Operating Screens**
- Selectable Conveyor Belt Type**
- Internal Memory and USB Disk Backup / Recovery**
- Easy Update through USB Memory Stick**
- Display & IOB Board Firware Update**

Optional Features

- External printer**
An external printer can be installed to the control unit. Preset parameter data and various performance data can be recorded and printed.
- Pulse Feedback Control**
Corrective control signals from the checkweigher to an upstream auger filler improve production efficiency.
- Metal Detector**
A high-efficiency metal detector can be easily added to provide an extra measure of safety and quality assurance.
- Wash Down for Conveyor**
Water Proof Motors and Stainless Steel Rollers are used for water proof.
- Communiation Interfaces**
Communication interfaces with a host computer or other external devices are available to help optimize your production line's performance.

Specification

Model	Standard	NWC 490S-100-200	NWC 490S-150-600	NWC 490S-220-1200	NWC 490S-300-3000	NWC 490S-350-6000	NWC 490S-400-18000	NWC 490S-500-30000	NWC 490S-600-60000
Maximum Capacity		200g	600g	1,200g	3,000g	6,000g	18kg	30kg	60kg
Weighing Range		1g ~ 200g	1g ~ 600g	1g ~ 1,200g	3g ~ 3,000g	3g ~ 6,000g	20g ~ 18,000g	20g ~ 30,000g	40g ~ 60,000g
Scale Interval		0.05g	0.1g	0.1g	0.5g	1.0g	5g	10g	20g
Maximum Accuracy*		±0.1g	±0.2g	±0.2g	±1.0g	±2.0g	±10g	±10g	±20g
Maximum Weighing Speed**		250ea/min	220ea/min	220ea/min	150ea/min	100ea/min	70ea/min	50ea/min	30ea/min
Conveyor Speed		10 ~ 70m/min	10 ~ 80m/min	10 ~ 100m/min	10 ~ 85m/min	10 ~ 70m/min	10 ~ 50m/min	10 ~ 50m/min	10 ~ 50m/min
Product Size	Width	10 ~ 100mm	10 ~ 150mm	10 ~ 220mm	10 ~ 300mm	10 ~ 360mm	10 ~ 400mm	10 ~ 500mm	10 ~ 600mm
	Length	30 ~ 200mm	50 ~ 250mm	50 ~ 350mm	70 ~ 350mm	70 ~ 450mm	30 ~ 500mm	30 ~ 700mm	30 ~ 900mm
	Height	5 ~ 100mm	5 ~ 150mm	5 ~ 220mm	5 ~ 300mm	5 ~ 360mm	5 ~ 400mm	5 ~ 500mm	5 ~ 600mm
Applicable Rejectors	Flip Bar(FB)	FB3-1045	FB3-1555	FB3-2265	FB3-3075	FB3-3085	None		
	Pusher on Belt(PB)	PB2-1035	PB2-1545	PB2-2245	PB2-3055	PB2-3665			
	Air Jet(AB)	AJ3-1035	AJ3-1555						
	Belt drop(BD)	DB2-1035	DB2-1545	DB2-2245	DB2-3055	DB2-3665			
	Pusher on Roller(PR)			None			PR2-4070	PR2-5090	PR2-6011
Power Requirements		220VAC±10%,Single Phase,50/60Hz				220VAC±10%,Single Phase,50/60Hz			
Environmental Conditions		5°C ~ 35°C (41°F ~ 95°F), Variation not to exceed ±2°C (4°F) / hr, Relative Humidity: 335% ~ 85%				5°C ~ 35°C (41°F ~ 95°F), Variation not to exceed ±2°C (4°F) / hr, Relative Humidity: 335% ~ 85%			